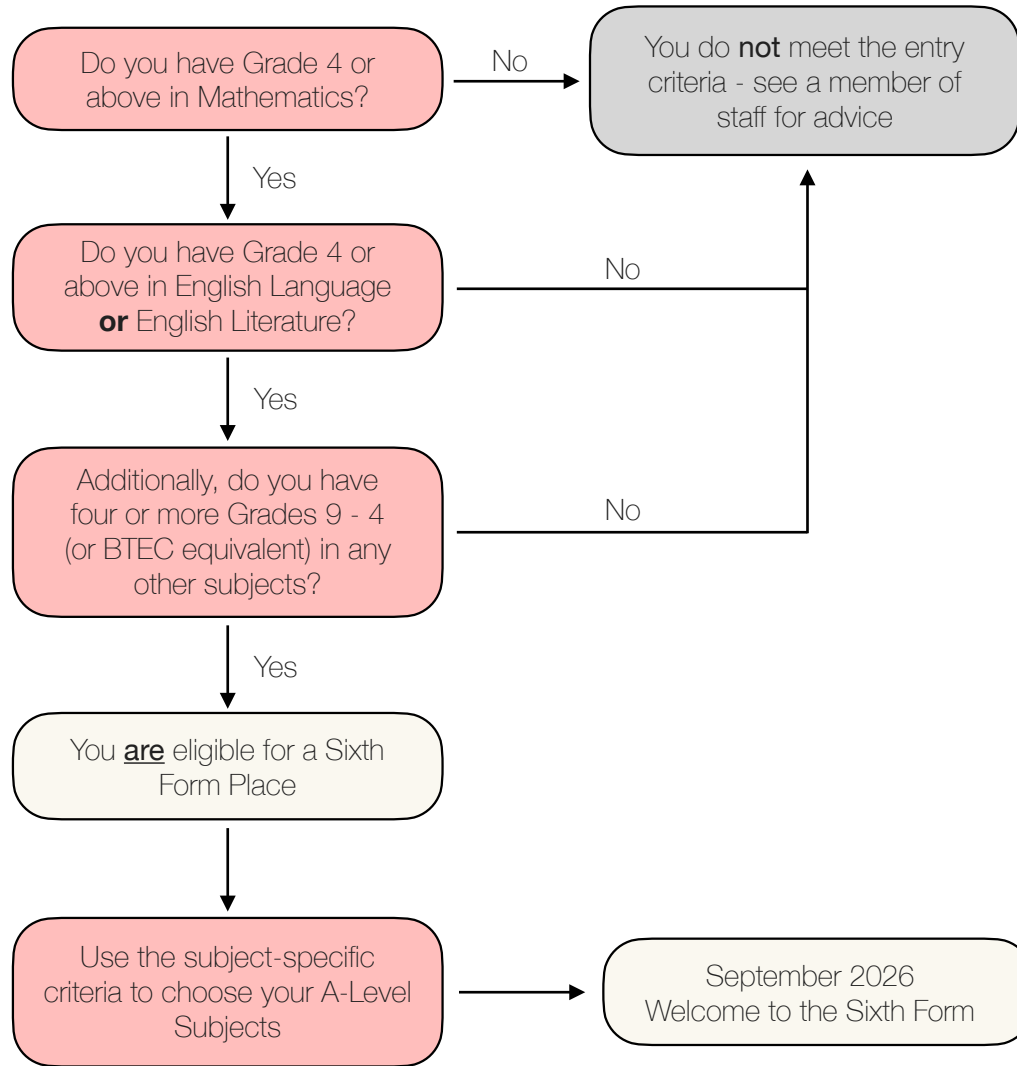


GCSE Results Day - 20 August 2026

Have you met the Sixth Form Entry Criteria?



2026 SIXTH FORM ENTRY CRITERIA

Students require a minimum of six GCSE passes comprising:

- In every case you must achieve a Grade 4 or better in Mathematics and either English Language *or* English Literature
- In addition to the above, you must achieve a minimum of four 9-4 grades (or BTEC equivalent) in any other subjects
- Choose three A-Level subjects from the twenty five listed overleaf and check that you meet the subject-specific criteria

Apply online
SixthForm.net

Apply online
SixthForm.net

Subject-Specific Criteria

Biology	Grade 6 in Mathematics <i>or</i> Grade 7 in Statistics, <i>and either</i> : Students who have studied Combined Science Trilogy: Grade 7-7 <i>or</i> Students who have studied Triple Award Science: Grade 7 in GCSE Biology
Business	Grade 5 in GCSE Business Studies (or Level 2 equivalent), if studied, <i>or</i> Grade 5 in GCSE English Language or Literature where GCSE Business Studies has not been studied
Chemistry	Grade 7 in Mathematics <i>and either</i> : Students who have studied Combined Science Trilogy: Grade 7-7 <i>or</i> Students who have studied Triple Award Science: Grade 7 in GCSE Chemistry
Computer Science	Grade 6 in GCSE Computer Science, if studied, or Grade 6 in GCSE Mathematics where GCSE Computer Science has not been studied
Design Engineering	Grade 6 in GCSE Design Engineering/Design Technology <i>or</i> Grade 5 in GCSE Mathematics
Drama and Theatre	Grade 6 in GCSE Drama <i>or</i> Grade 5 in GCSE English Language or Literature
Economics	Grade 7 in GCSE Mathematics or Statistics <i>and</i> Grade 6 in English Language <i>or</i> Literature
English Language	Grade 6 in GCSE English Language
English Literature	Grade 6 in GCSE English Literature
Fine Art	Grade 6 in GCSE Art <i>or</i> Distinction at BTEC Art Level 2
French	Grade 6 in GCSE French
Further Mathematics	Grade 9 in GCSE Mathematics <i>or</i> Grade 8 in GCSE Mathematics with a fourth subject taken in addition to Further Mathematics
Geography	Grade 6 in GCSE Geography

Subject-Specific Criteria

History	Grade 6 in GCSE History <i>and</i> Grade 6 in English Language <i>or</i> Literature
Law	Grade 6 in GCSE English Language <i>or</i> Literature
Mathematics	Grade 7 in GCSE Mathematics
Media Studies	Grade 5 in GCSE English Language <i>or</i> Literature
Music	Grade 6 in GCSE Music, if studied, <i>or</i> must be an able performer (Grade 5+) <i>and</i> will have undertaken theory work of Grade 5 standard
Physical Education <i>Students who wish to study PE at A-Level should be active participants in competitive sport; the PE department can advise</i>	Grade 6 in GCSE PE, if studied, <i>or</i> Students who have studied Combined Science Trilogy: Grade 6-6 <i>or</i> Students who have studied Triple Award Science: Grade 6 in GCSE Biology
Physics	Grade 7 in Mathematics <i>and either</i> : Students who have studied Combined Science Trilogy: Grade 7-7 <i>or</i> Students who have studied Triple Award Science: Grade 7 in GCSE Physics
Politics	Grade 6 in GCSE English Language <i>or</i> Literature
Psychology	Grade 5 in GCSE English Language <i>or</i> Literature, <i>and</i> Students who have studied Combined Science Trilogy: Grade 6-6 <i>or</i> Students who have studied Triple Award Science: Grade 6 in GCSE Biology
Religious Studies	Grade 6 in GCSE Religious Studies <i>or</i> Grade 6 in GCSE English Language <i>or</i> Literature
Sociology	Grade 5 in GCSE English Language <i>or</i> Literature
Spanish	Grade 6 in GCSE Spanish